

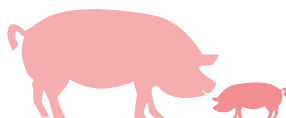


PROBISAN SWINE-MET



Animal Health

Action against E.coli



Post-biotic product obtained from the fermentation of a culture of microorganisms, transformed during the manufacturing process itself
compliant with regulation UE/2017/1017 P.28

Healthier animals.
Reduction of the application of Zinc Oxide



European
Commission

Co-funded by the Horizon 2020 programme
of the European Union

The EU Framework Programme for Research and Innovation



What is SWINE-MET?

SWINE-MET is a postbiotic. Its activity lies in the METABOLITES produced by lactic bacteria selected for their ability to produce BACTERIOCINS against E.coli by means of our specific production system.

All the enterotoxigenic E. coli strains of pork origin tested (>50) were sensitive to the bacteriocins present in SWINE-MET. The bacteriocins all belong to the IIb group, which act forming pores in the bacteria's membrane. They are thermostable and resistant to the stomach's acidic pH.

Advantages of SWINE-MET

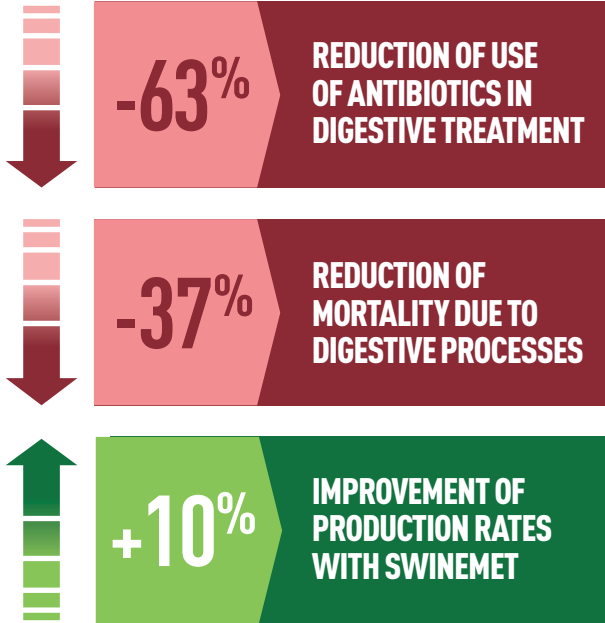
- Using SWINE-MET in pig rearing **keeps the concentration of E.coli and other enterobacteria** in the intestine low.
- It **reduces mortality by an average of 37%** in cases of enterotoxigenic colibacillosis.
- **Reduces use of injectable antibiotics** in digestive treatments by 63%.

SWINE-MET

⊖ Antibiotics

⊖ Mortality

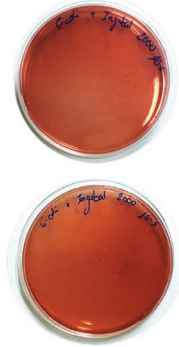
+ Productivity



ANTI-MICROBE EFFECT OF SWINEMET AGAINST ENTEROTOXIGENIC E.COLI STRAINS CAUSING DIARRHEA IN SWINE



Negative control
E.coli monocolture



E.coli + SWINE MET
strains co-culture

Production guarantee

SWINE-MET is produced with registered strains of lactic bacteria and yeast deposited in the Spanish Standard Culture Collection (CECT).

Raw materials of NON-GMO origin and products authorised in accordance with the highest production standards are used in their production. Our production installations and processes are certified by GMP+.





SWINE-MET

When to apply and dose to administer

Highly recommended in the weaning phase in the case of digestive complications with E.coli enterobacteria.

It helps enhance the development of the intestinal microbiota and reduces intestinal disbiosis creating optimum conditions for generating future fattening pigs with superior growth qualities.

Pigs	Gestation	2 kgs/Tm
	Lactation	1.25 kgs/Tm
Piglets	Milk starter	2 kgs/Tm
	Prestarter	2 kgs/Tm
	Starter	1.25 - 2 kgs/Tm
Fattening	Fattening	1 kg/Tm

Composition

Wheat bran, alfalfa flour, non-bitter yeast, fructo-oligosaccharides.

Crude protein.....	19.64 %
Crude fibre.....	11.90 %
Crude oils and fats	4.60 %
Crude ash	5.82 %
Lysine.....	0.82 %
Sodium.....	0.20 %
Methionine	0.29 %
Calcium	0.27 %
Phosphorous	0.70 %



Animal Health

Pentabiol S.L

Pol. Indust. Noáin Esquíroz
Calle S/Nave-4
31191 Navarra
(SPAIN)
Tel. +34 948 312 028
mail: info@pentabiol.es
www.pentabiol.es